



**CURB RAMP**



Successfully tested for 28 years and counting  
Channeled for water flow  
Connected with polyethelene straps to reduce shifting  
Fits all standard residential curbs

**Dimensions:** 48"L x 17.5"W x 3.5"H

**Weight:** 40 lbs.



**THRESHOLD RAMP**



Perfect for wheelchair and dolly use  
Slip resistant, durable surface

**Dimensions:** 35.5"L x 12"W x 1.5"H

**Weight:** 15 lbs.



**GARAGE RAMP**



Perfect for driveways that have dropped away from garage surface  
Can be used with forklifts  
Industrial strength to accomodate heavy loads

**Dimensions:** 35.5"L x 17"W x 3.5"H

**Weight:** 45 lbs.



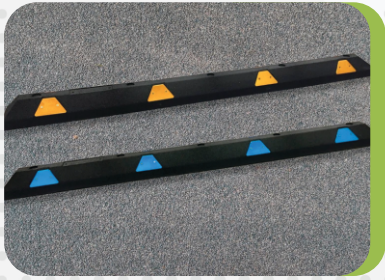
**CUSTOM SOLUTIONS**



**LANDSCAPING**



**FLOORING**



**PARKING CURBS**



Replace standard concrete parking curbs with our rubber curbs for ease of installation and decrease of vehicle damage  
Economical and long lasting  
Easy to install  
Weather resistant

**Dimensions:** 72"L x 6"W x 5"H

**Weight:** 30 lbs.



**6 FOOT  
SPEED BUMP**



Easily installed on gravel, asphalt or concrete surfaces with optional mounting pins (easily removed for winter) or adhesive  
Reflective tape and cat eyes create day and night visibility  
Two 1" channels for utility lines/cables  
Durable and long lasting

**Dimensions:** 6'L x 12"W x 2.5"H

**Weight:** 50 lbs.



**INDUSTRIAL  
SQUARE CURB**



Designed for access to construction sites, concert venues, or temporary high traffic areas.  
Can support gravel trucks and semi trailers  
Industrial strength to accommodate heavy loads  
Easily strapped together for extended access  
Channeled for water flow

**Dimensions:** 40"L x 17.5"W x 5"H

**Weight:** 60 lbs.



**RUBBER MATS**



Great for garages, workout rooms, hockey arenas, dog runs, and truck bed liners.  
Easy to clean and fire resistant

**Dimensions:** 48"L x 72"W x 0.5"H

**Weight:** 60 lbs.





**SAFE PLAY RUBBER**



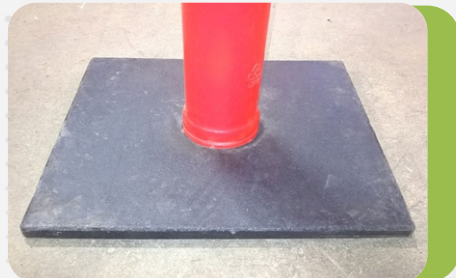
**ECO EDGE**



**PRO-FIT FLOORING**



**PATIO TILES**



**DELINEATOR BASE**



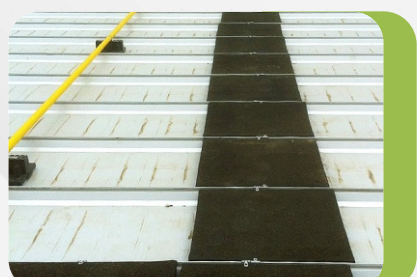
**FLAGSTONE TILES**



**CHIP MULCH**



**RUBBER MATTING**



**ROOFTOP WALKWAY**



**SPLASH PADS**



**TURF INFILL**



**INTERLOCKING TILES**

**PLEASE CONTACT US FOR PRICING AND AVAILABILITY**